

# **Experimental Law: A Quantitative Thermodynamic Approach**

Klaus Jaffe

Universidad Simón Bolívar, Caracas,  
Venezuela

# Synergy

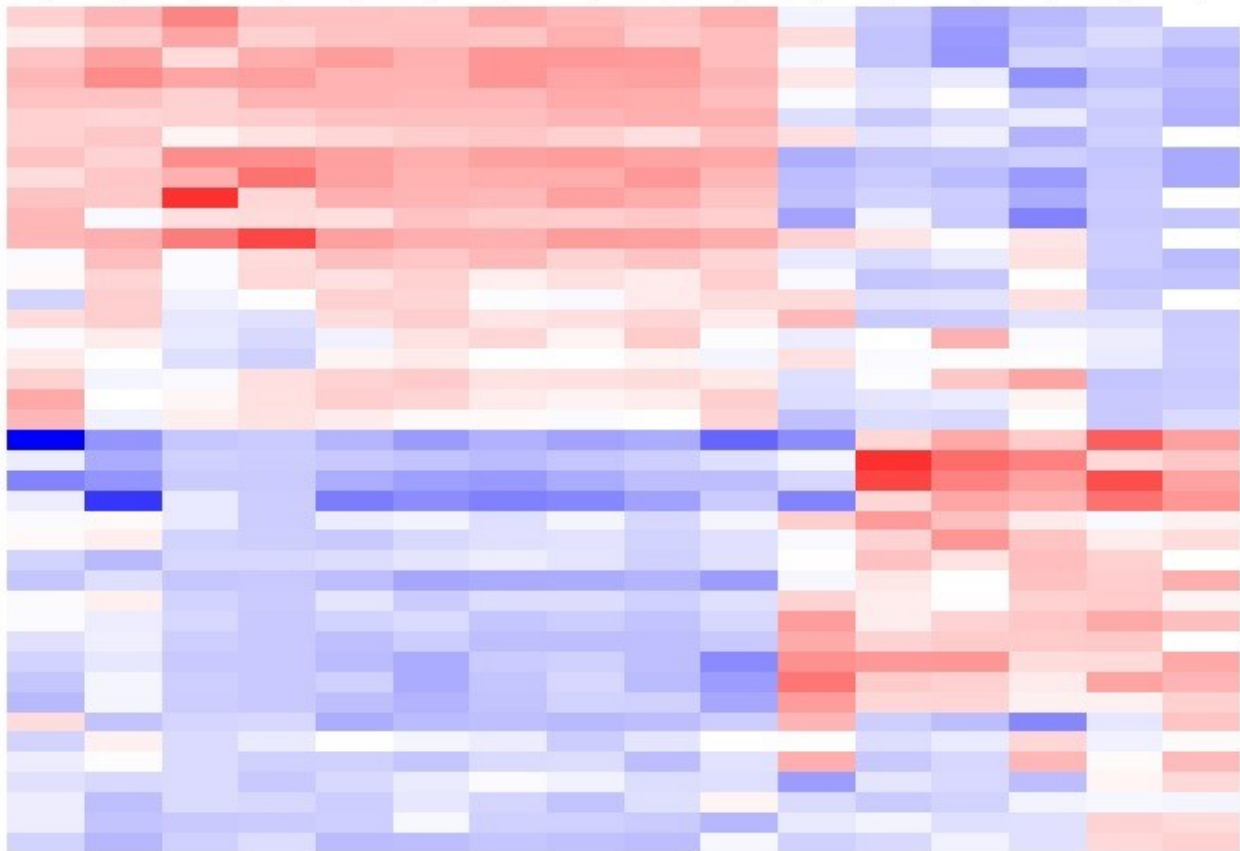
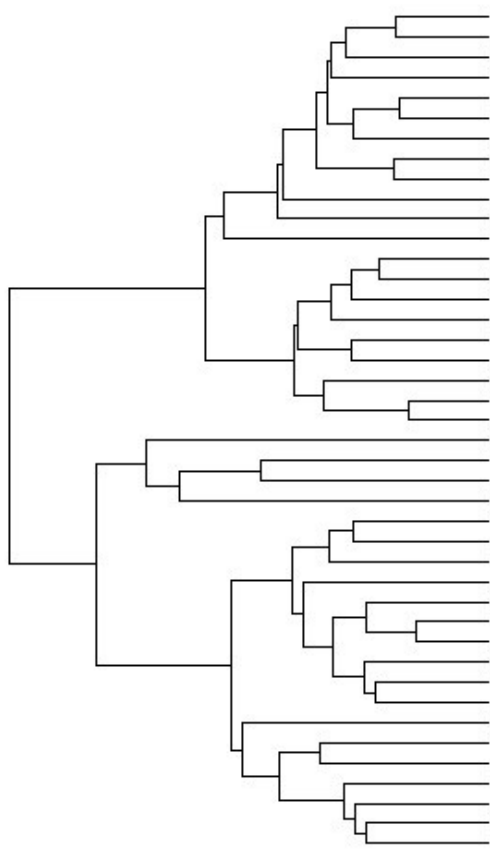
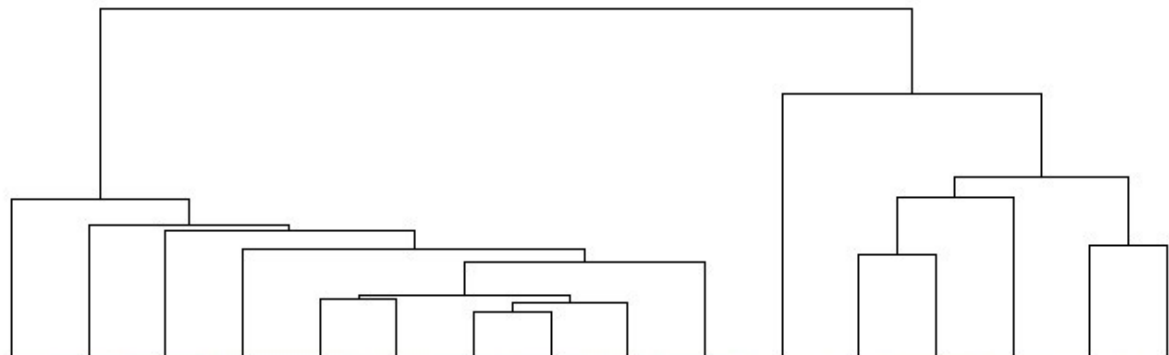
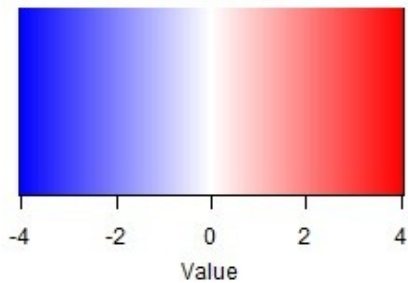




$$\Delta\Phi = \mathbf{k}_i \cdot \Delta\boldsymbol{\eta}$$

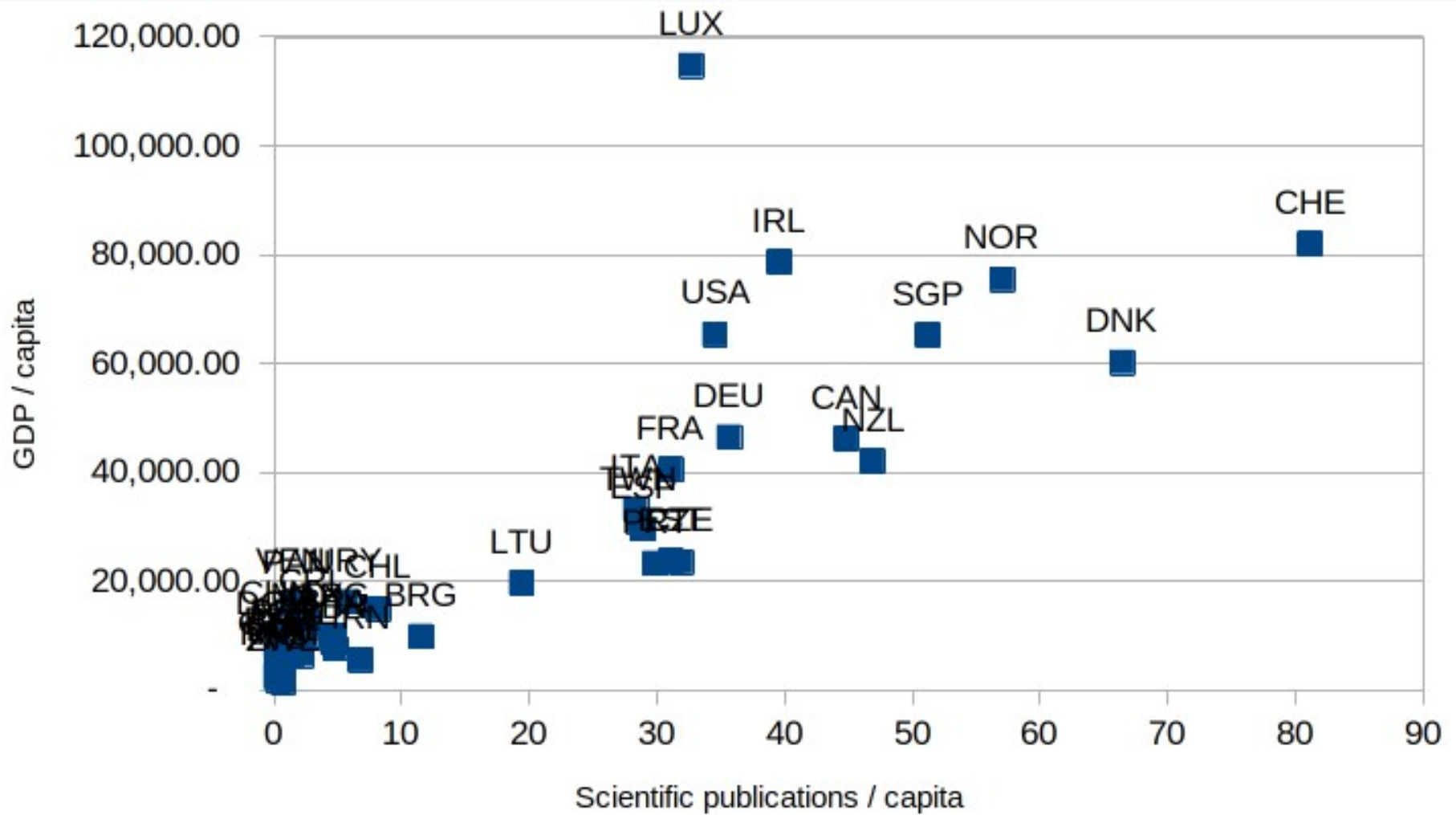


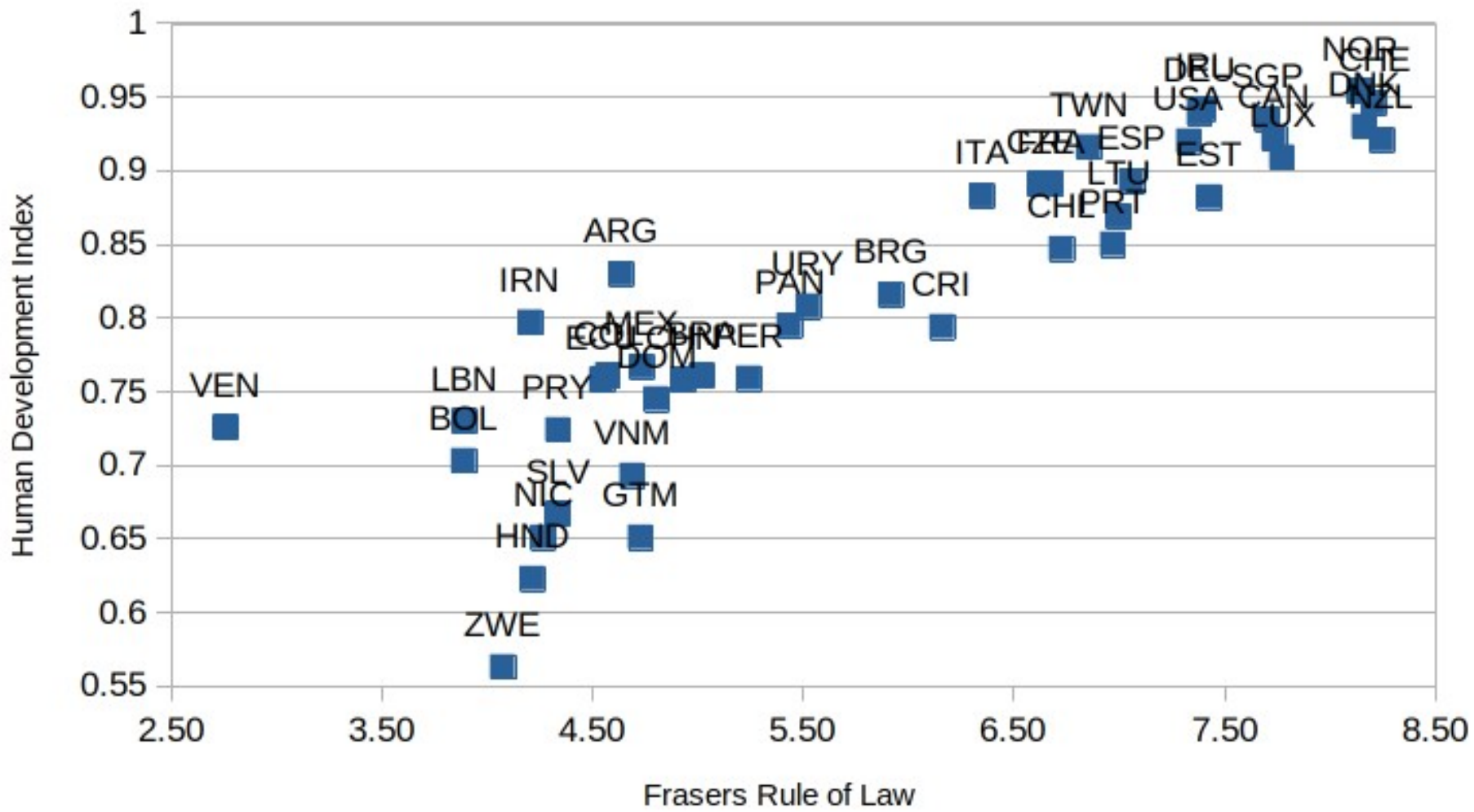
Color Key



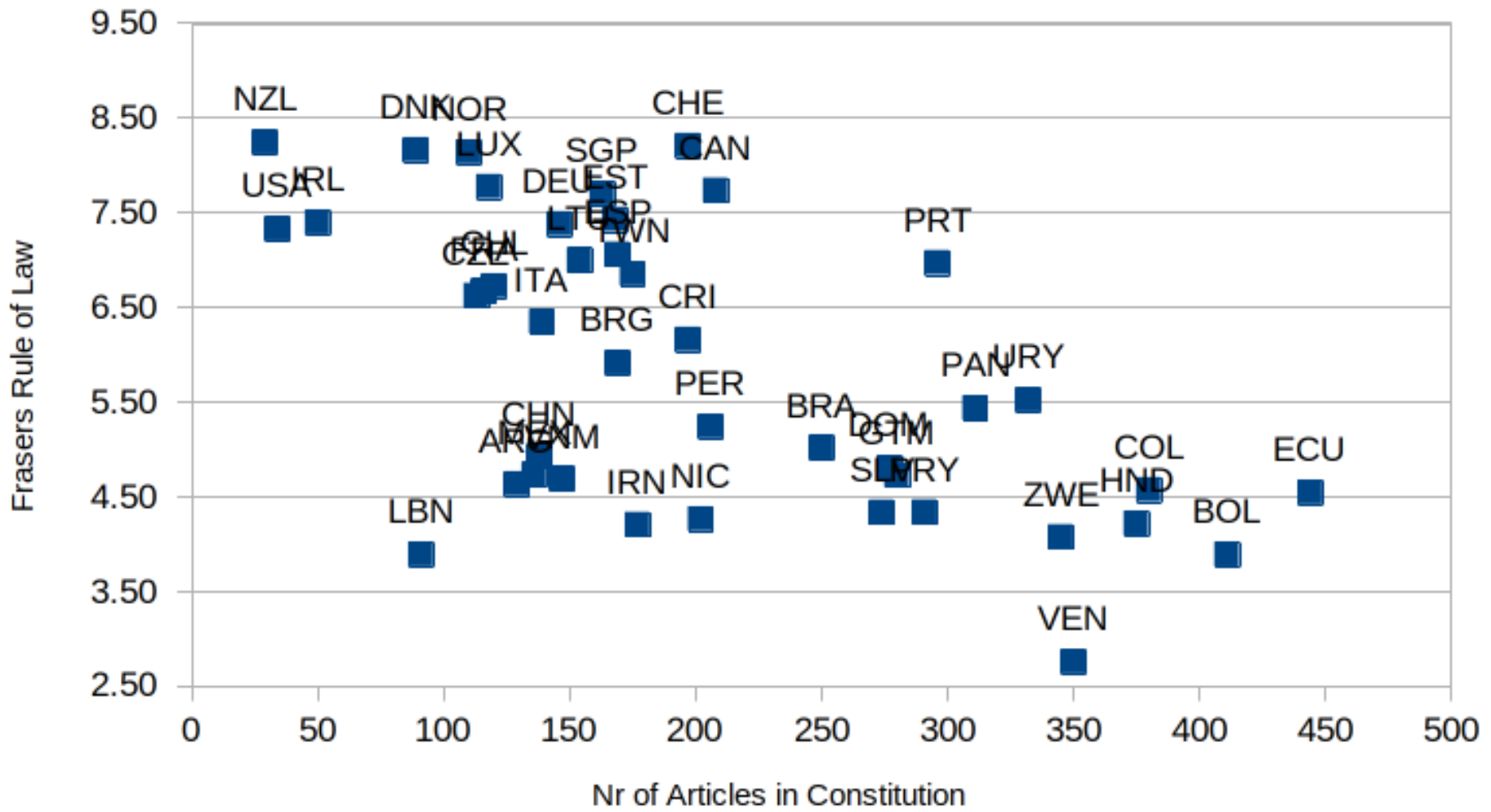
- IRL
- USA
- NZL
- SGP
- Can
- Deu
- TWN
- NOR
- Dnk
- LUX
- FRA
- CHE
- EST
- CZE
- LTU
- Chi
- URY
- Cri
- PRT
- ESP
- ITA
- ZWE
- Ecu
- Bol
- VEN
- PAN
- Col
- Bra
- NIC
- PER
- DOM
- PRY
- HND
- GTM
- Slv
- LBN
- Brg
- MEX
- Chn
- Arg
- VNM
- IRN

EspVid  
OS HEF  
GDPc  
pub/cap  
Legal  
WBGi  
HEF  
IPR  
Corrup/TI  
HDI  
Gover  
Arts PP  
Arts G  
NR  
Mortinf  
WJIP









$$\Delta\Phi = \mathbf{k}_i \cdot \Delta\boldsymbol{\eta}$$

$\boldsymbol{\eta}$  ?



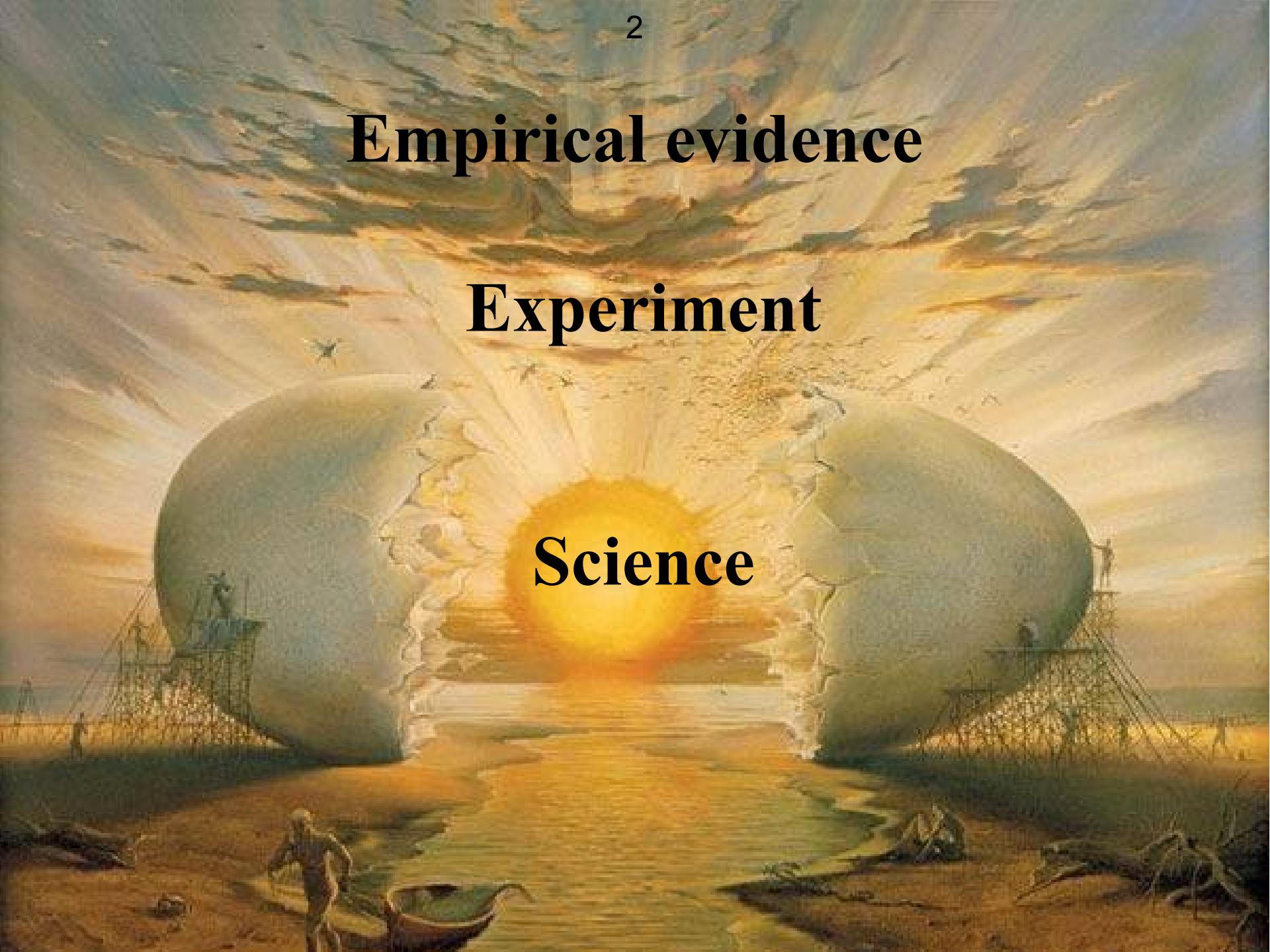


Pere Borrell del  
Caso  
1874

**Empirical evidence**

**Experiment**

**Science**





[kjaffe@usb.ve](mailto:kjaffe@usb.ve)